



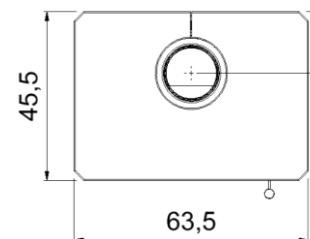
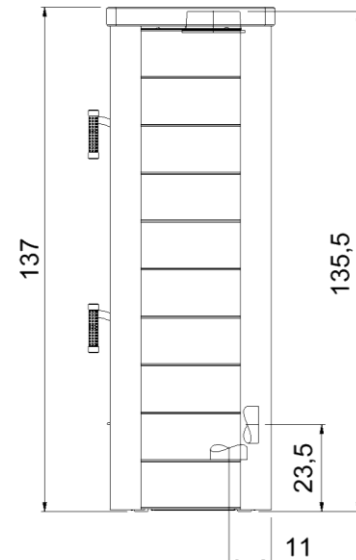
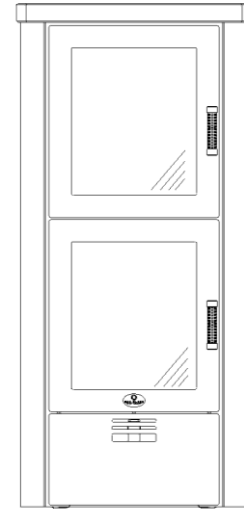
**MAX BLANK**  
HIGH QUALITY

# BAMBERG BF

**wood or pellet  
without electricity**

## Technical specifications of the stove with roast & bake comp.:

measurements (cm)	width	height	depth
stove	63,5	137	45,5
combustion chamber	37	30	29
fire glass	34	40	
fire door	46	52	
roast & bake comp.	34	30	30
<b>flue pipe connection Ø 15 to → or ↑</b> height to top pipe socket			135,5
<b>outside air connection Ø 10 to → or ↓</b> height to mid connection horizontal			23,5
depth to mid connection vertical			11
<b>total weight</b>	<b>chamotte bricks</b>	<b>heat accumulator</b>	
322 kg	26 kg	-	
<b>data for</b>	<b>pellet box S</b>	<b>pellet box XL</b>	<b>wood</b>
nominal heat output	7,5 kW	11 kW	6,5 kW
output range	7,5 - 5 kW	11 - 8,5 kW	6,5 - 3,3 kW
efficiency	86%	85%	87%
heating capability*	50 - 150 m <sup>3</sup>	70 - 250 m <sup>3</sup>	70 - 250 m <sup>3</sup>
amount of fuel	3,8 kg	7,5 kg	2,9 kg / h
fire duration	up to 2,5 h	up to 5 h	up to 5 h
heat release	up to 10 h	up to 13 h	up to 13 h
flue gas flow volume	8,97 g/s	10,74 g/s	10,3 g/s
exhaust °C (nozzle)	180 °C	230 °C	268°C
min/max feed press.	12 / 15 Pa	13 / 15 Pa	12 / 15 Pa
CO (13%/O <sub>2</sub> ) [mg/m <sup>3</sup> ]	1166	880	1074
CO (13%/O <sub>2</sub> ) [%]	0,093	0,070	0,086
dust (13%/O <sub>2</sub> ) [mg/m <sup>3</sup> ]	36	30	31
NO <sub>x</sub> (13%/O <sub>2</sub> ) [mg/m <sup>3</sup> ]	109	110	115
CxHy (13%/O <sub>2</sub> ) [mg/m <sup>3</sup> ]	54	41	51
wall distance, rear	15 cm	20 cm	15 cm
wall distance, side	15 cm	15 cm	15 cm
distance to the front	80 cm	80 cm	80 cm



The Bamberg BF, the stove with roast & bake compartment is excellent in quality, energy consumption and environmental performance.

Fulfils the latest standards in burning wood, wood-briquettes and pellets (please see applicable standards).

**Please check the instruction manual for this wood & pellet burning stove with roast/bake compartment.**

Suitable for multiple chimneys.

\* depending on stove location in the living area, room isolation, height of the room and amount of fuel

Subject to alterations; errors including printer's errors.

**Our specialised stove builders and retailers will assist you with practical advice.**

## Stove with roasting and baking compartment, model Bamberg BF

ENR	model	delivery time	
185-2001	<b>Bamberg BF</b> † <ul style="list-style-type: none"> <li>• stove body steel anthracite</li> <li>• side panels and lid natural stone chiselled grey</li> </ul>	4	
185-2004	<b>Bamberg BF</b> † <ul style="list-style-type: none"> <li>• stove body steel anthracite</li> <li>• side panels and lid natural stone light grey blasted</li> </ul>	4	
185-2007	<b>Bamberg BF</b> † <ul style="list-style-type: none"> <li>• stove body steel anthracite</li> <li>• side panels and lid natural stone brushed slate</li> </ul>	4	
<b>pellet accessories for the stove with roasting and baking compartment</b>			
552-2014	<b>pellet box S with 7,5 kW (at purchase with a stove)</b> <b>pellet box S with 7,5 kW (retrofit kit)</b>		
552-2004	<b>pellet box XL with 11 kW (at purchase with a stove)</b> <b>pellet box XL with 11 kW (retrofit kit)</b> <ul style="list-style-type: none"> <li>• made of heat-resistant stainless steel</li> <li>• at type S with 2, at type XL with 3 black ceramic specialised glasses</li> <li>• with lighter, silicone gloves, pellet-felt bag up to 20 kg, cleaning brushes, pellet shovel provided</li> </ul>		
29 184 311	<b>floor protector stainless steel (see accessories)</b>  <b>included in scope of delivery:</b> 308 046 tray for roasting and baking compartment 308 047 chrome grill 308 074 low-maintenance, anthracite lava rock 308 057 thermometer for baking compartment  <b>Be sure to specify when ordering:</b> <b>outside air connection horizontal or vertical</b> (is included in scope of delivery)  For other connection accessories, please see list of accessories.		
<b>special features of the stove with roasting and baking comp., model Bamberg BF</b>			
pellet-wood-combination: heat independent & without power <ul style="list-style-type: none"> <li>• 4-time benefits: warm-up, cook, relax and store heat</li> <li>• Simple and very easy swap between wood or pellet - just one minute!</li> <li>• comfortable handling of pellets: fill-up pellets, ignite and enjoy up to 6 hours of fire &amp; burning heat savour up to 13 hours of heat distribution</li> <li>• both eye-catchers: pellet and wood logs</li> <li>• the backing compartment comes with stainless steel side walls and two rails for trays</li> <li>• integrated regulator for the smoke extractor</li> <li>• with enamelled backing tray &amp; grill</li> <li>• with anthracite backing-lava-rock</li> <li>• adjustable feet for a stable set up</li> <li>• please choose a stainless steel floor protector from the list of accessories</li> </ul> <p style="text-align: center;"><b>Please also look up the features of the natural stone collection!</b></p>			