



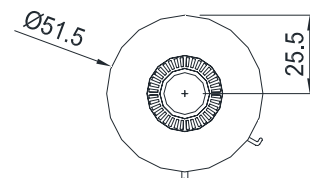
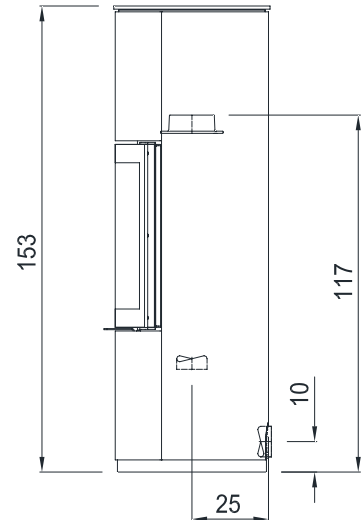
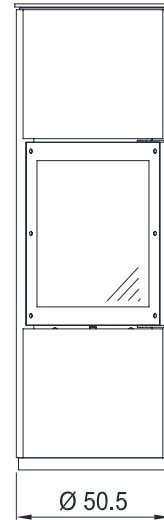
MAX BLANK
HIGH QUALITY

NIMES L Steel / Stone

**wood or pellet
without electricity**

Technical specifications of the round stove:

| measurements (cm) | width | height | depth |
|---|-------------------------|-------------------------|-------------|
| stove | 51,5 / 55,5 | 152 - 153,5 | 51,5 / 55,5 |
| combustion chamber | 34 | 60 | 30 |
| fire glass | 36 | 48 | |
| fire door | 44 | 60 | |
| flue pipe connection Ø 15 to → or ↑ height to pipe socket above | | | 117 |
| outside air connection Ø 10 to → or ↓ height to mid connection horizontal | | | 10 |
| depth to mid connection vertical | | | 25 / 27 |
| total weight | chamotte bricks | heat accumulator | |
| 230 / 395 / 402 kg | 22 kg | 68 kg | |
| data for | pellet box | wood | |
| nominal heat output | 5,0 kW | 4,7 / 5,1** kW | |
| output range | 5 - 3 kW | 5,6 - 3 kW | |
| efficiency | 76% | 75 / 81** % | |
| heating capability* | 50 - 150 m ³ | 70 - 210 m ³ | |
| amount of fuel | 2,7 kg | 1,7 kg / h | |
| fire duration | up to 2 h | up to 4 h | |
| heat release | up to 9 h | up to 10 h | |
| flue gas flow volume | 8,28 g/s | 5,89 g/s | |
| exhaust °C (nozzle) | 270 °C | 300 / 235** °C | |
| min/max feed press. | 12 / 15 Pa | 12 / 15 Pa | |
| CO (13%/O ₂) [mg/m ³] | 226,9 | 887 | |
| CO (13%/O ₂) [%] | 0,018 | 0,071 | |
| dust (13%/O ₂) [mg/m ³] | 12 | 34 | |
| NOx (13%/O ₂) [mg/m ³] | 125 | 133 | |
| CxHy (13%/O ₂) [mg/m ³] | 17 | 52 | |
| wall distance, rear | 10 cm | 10 cm | |
| wall distance, side | 10 cm | 10 cm | |
| distance to the front | 65 cm | 90 cm | |



Fulfils the latest standards in burning wood, wood-briquettes and pellets (please see applicable standards).

Please check the instruction manual for this wood & pellet burning stove.

Suitable for multiple chimneys.

Optionally with balanced flue operation
DIBt-Approval Z-43.12-354.

* depending on stove location in the living area, room isolation, height of the room and amount of fuel

** emission values at 75 cm flue pipe length

Subject to alterations; errors including printer's errors.

Our specialised stove builders and retailers will assist you with practical advice.

Round stove, model Nimes L

| ENR | model | delivery time | |
|---|--|---------------|--|
| 244-2201 | Nimes L Steel ↑ → <ul style="list-style-type: none"> • stove body steel anthracite • glass lid, fire door and base black | 3 | |
| 243-2201 | Nimes L Stone ↑ → <ul style="list-style-type: none"> • stove body stone light grey blasted • glass lid, -ledge, fire door and base black | 3 | |
| 243-2401 | Nimes L Stone ↑ → <ul style="list-style-type: none"> • stove body stone cream smooth • glass lid, -ledge, fire door and base black | 3 | |
| 243-2101 | Nimes L Stone ↑ → <ul style="list-style-type: none"> • stove body stone cream chiselled • glass lid, -ledge, fire door and base black | 3 | |
| pellet accessories for the round stove | | | |
| 554-2004 | pellet box with 5 kW (at purchase with a stove) pellet box with 5 kW (retrofit kit) <ul style="list-style-type: none"> • made of heat-resistant stainless steel • with 1 black cream special glass • with lighter, silicone gloves, pellet-felt bag up to 20 kg, cleaning brushes, pellet shovel provided | | |
| 303233-916 | additional heat accumulator (8 stones with 68 kg) | | |
| 303 002 | DIBt-approval for air-independent versions. (not possible for rotatable versions) on request with stone lid in either: <ul style="list-style-type: none"> - natural stone light grey blasted - natural stone chiselled grey - natural stone anthracite flamed base for rotatable version (only with vertical outside air connection possible!) | | |
| 29 232 311 | floor protector stainless steel (see accessories) | | |
| 29 232 400 | floor protector glass (see accessories) especially for this stove type | | |
| | Be sure to specify when ordering: outside air connection horizontal or vertical (is included in scope of delivery) | | |
| special features of the round stove, model Nimes L | | | |
| <p>Heat without electrical power and use all advantages of this double feature oven: pellet and wood. Swap easy and comfortable between fuels within 5 minutes. Discover the special features of our fire-combo-romantic on YouTube. Free to choose fuel makes you more independent. Get whatever is cheapest at the moment and save money.</p> <p>The round stove, model Nimes L</p> <p>Fire logs create a special and very interesting flame and even a fire-romantic.</p> <ul style="list-style-type: none"> • up to 10 hours of heat distribution and accumulation • the ideal model for a corner, requires only 10cm distance from a wall • the circular round rear wall offers ideal fire views • beautiful natural stone covers • soft edges without overlapping edges • comfortable and always cool - the stainless steel door handle • patented, easy to use and self-closing door latch • all editions are available with additional heat accumulation • also available as a rotatable edition • choose your stainless steel or glass floor protector from the list of accessories <p style="text-align: center;">Please also look up the features of the natural stone collection!</p> | | | |