

## HSP 2.17 Premium-III-2019

**Equipment sheet**  
Pellet stove

**GB**

# Notes in the text



Of utmost importance there are the notes entitled **WARNING**. The notes entitled **WARNING** advise you on **serious danger of damage to the heating device or of an injury**.



The note entitled **Notice** advises you on possible damage to your heating device.



The note entitled **Important** calls your attention to the information important for the operation of your heating device.



The note itself calls your attention to the information important for the operation of your heating device in general.

# Contents

<b>1. Technical data</b> .....	1
<b>2. Dimensions</b> .....	2
<b>3. Cleaning work</b> .....	3
3.1. Cleaning the surface .....	3
3.2. Cleaning the glass panel .....	3
3.3. Clean combustion chamber "function instruction" Error F040 .....	3
3.4. Cleaning the combustion pot - weekly .....	3
<b>4. Maintenance work</b> .....	5
4.1. Cleaning the flue gas passes .....	5
4.2. Cleaning the pellet container - annual maintenance .....	8
<b>5. Replacement parts list</b> .....	9
5.1. Replacement parts list HSP 2.17 Premium-III (without trim parts) .....	9
5.2. Detail A1 .....	11
5.3. Replacement parts list HSP 2.17 Premium-III .....	12
<b>6. Circuit diagram</b> .....	14



# 1. Technical data

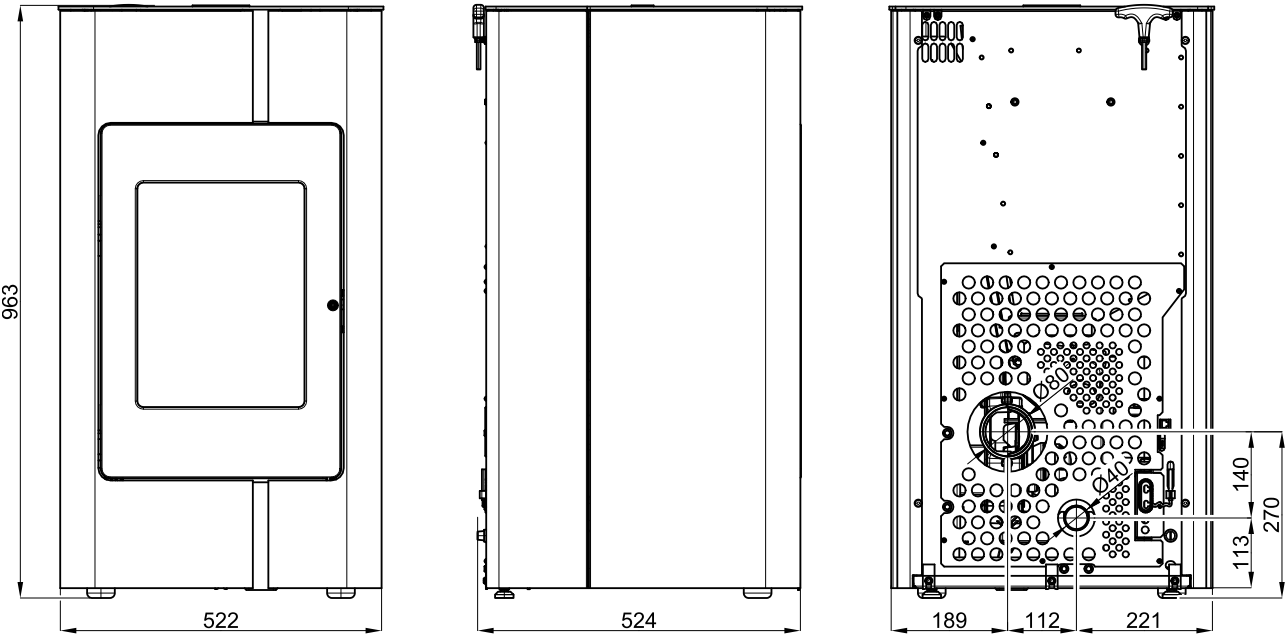
	HSP 2.17 Premium-III
Heat output range:	2,4 – 8,6 kW
Nominal heat output:	8,0 kW
Height:	963 mm
Width:	522 mm
Depth:	524 mm
Weight:	98 kg
Diameter of flue elbow:	80 mm
Flue gas temperature:	198 °C
Testing transport pressure at nominal output:	11 Pa
Testing transport pressure at partial output:	7 Pa
Flue gas flow rate in g/s	5,6 g/s
CO level in flue gas (%) (min./max.)	0,01/0,02 %
Efficiency:	90/94 %
CO level in flue gas:	175/250 mg/Nm <sup>3</sup>
NOx level in flue gas:	149/– mg/Nm <sup>3</sup>
OGC level in flue gas:	5/5 mg/Nm <sup>3</sup>
Proportion of dust in flue gas:	5/– mg/Nm <sup>3</sup>
Contents of storage container (pellet tank):	about 17 kg
Duration of burn with one charge (min./max.):	about 10 h/30 h
Permitted fuel: Low-dust wood pellets	diameter: 6 mm
to Ö-Norm M 7135, DIN plus, EN plus-A1	length: max. 30 mm
Room heating capacity to Ö-Norm M 7521:	max. 230 m <sup>3</sup>
Room heating capacity to DIN 18893, constant heating:	250m <sup>3</sup> /145m <sup>3</sup> /98m <sup>3</sup>
Room heating capacity to DIN 18893, timed heating:	165m <sup>3</sup> /95m <sup>3</sup> /65m <sup>3</sup>
Electricity supply:	230 V (50 Hz)
Electricity supply input:	
in normal operation:	max. 50 W
Electric ignition (for max. 15 minutes on ignition):	max. 400 W
Electronics fuses: (F3)	T 0,315 A, 250 V
Fuses for the ignition, screw conveyor motor, induced draught, (F1)	T 3,15 A, 250 V

## Safety distances

Minimal distances from flammable materials:	side:	10 cm
	rear:	5 cm
	front (radiation area):	80 cm

# 2. Dimensions

Dimensions



GB

# 3. Cleaning work



## WARNING

**Before starting any cleaning work, the stove must be cool down!**

**Once the cleaning work is completed, the correct operating status of the device must be re-established: Put the combustion pot in correctly, close the combustion chamber door.**

## 3.1. Cleaning the surface

Dirt on the upper surface of the stove may be cleaned off with a damp cloth or if necessary with mild soapy water. You are advised against using corrosive cleaning agents and solvents since these might damage the surfaces.

## 3.2. Cleaning the glass panel

To clean the viewing panel, you must first open the stove door. Dirt on the glass panel can be removed with a glass cleaner or with a damp sponge on which you have sprinkled some of the wood ash present. (Environmentally friendly). Cleaning the glass panel may only be done with a cooled down stove in the OFF operating mode.

## 3.3. Clean combustion chamber “function instruction” Error F040

- The whole combustion space must be cleaned after **30-hours operation at the latest, or once a week.**
- The requirement to clean the fire-box (flickering of the display) appears during heating, in case that the cleaning interval has elapsed.
- After the fire-box has been cleaned, the error message "Clean the fire-box" will be confirmed automatically. The condition for automatic confirmation of this error message is that the fire-box door is opened for more than **60 seconds**. This time is necessary for careful cleaning of the fore-box, including the burner.
- This reset of the operating hours counter occurs even if the cleaning of the combustion chamber is performed before the 30 operating hours have run provided that the stove is in “Off” operating status and the door is open for longer than 60 seconds during cleaning.

## 3.4. Cleaning the combustion pot - weekly

During operation, deposits may form in the combustion pot. How quickly the combustion pot becomes dirty depends solely on fuel quality. The deposits or encrustations must be removed from time to time.



## **WARNING**

If this is not done, the clinker will continue to accumulate. Then the device will no longer be able to ignite properly. Pellets can pile up in the combustion pot. In extreme cases, this can reach all the way back to the pellet chute. Backfire in the pellet container and smouldering in the pellet tank might possibly result.

**This will destroy your device and is not covered in your guarantee.**



## **WARNING**

**Cleaning the combustion pot may only be done with a cooled down stove in “OFF” operating mode. Otherwise there is a risk of burns!**

- Take out the burner bowl from the stove.
- Remove the remains of ashes and slag.
- After the cleaning, mount the burner bowl back to its proper position on the burner rest.
- Re-check the proper seating of the burner bowl, in order to avoid any lack of tightness.



## 4. Maintenance work



### WARNING

**Before starting any cleaning work, the stove must be cool down! The mains plug must be pulled out of the power supply socket (always in advance)!**

The frequency of maintenance in turn depends to a large extent on the pellet quality (ash content). Quality pellets have a low ash content of about 0.2-0.3%. However, if the ash content is higher (0.5% and over), the interval from maintenance to maintenance is reduced and the accumulation of ash increases by 2 or 3 times.



### WARNING

**Devices that are not maintained in accordance with our specifications must not be operated. Failure to observe this point will invalidate all guarantee claims.**

### 4.1. Cleaning the flue gas passes



### CAUTION

Check and clean the flue-gas ways, exhaust (flue-gas) fan and flue-gas ducts at the latest after 1000 kg of pellets have been consumed. Clean with a brush or an ash extractor.



### CAUTION

After completion of the cleaning make sure that when putting back the covers, the seals are seated in the right positions. It is essential to replace defective seals.

Please perform the cleaning in two steps:

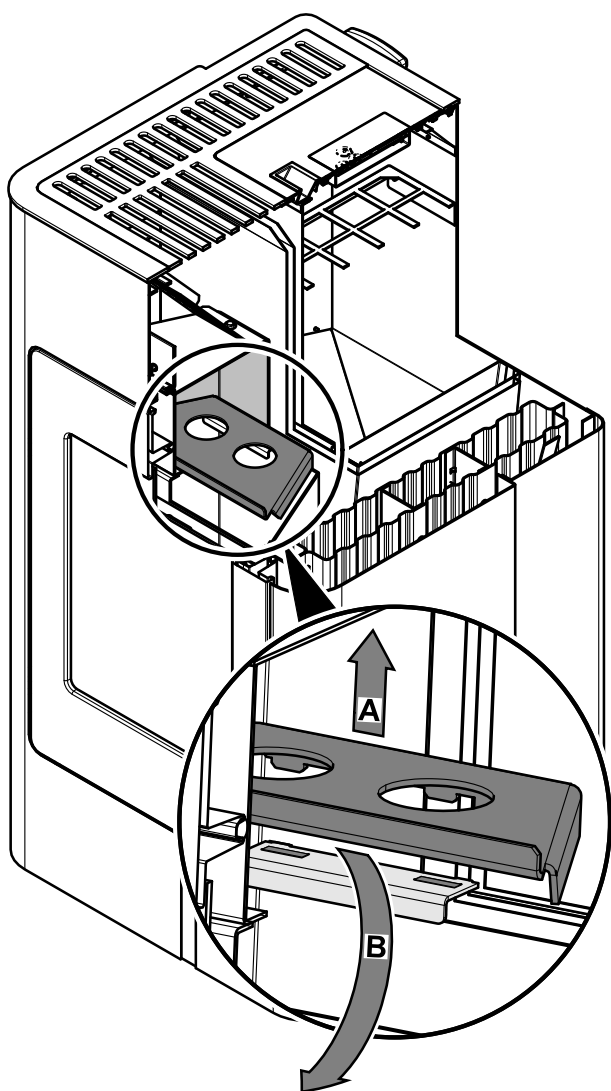


Figure 1: Removing the flue baffle

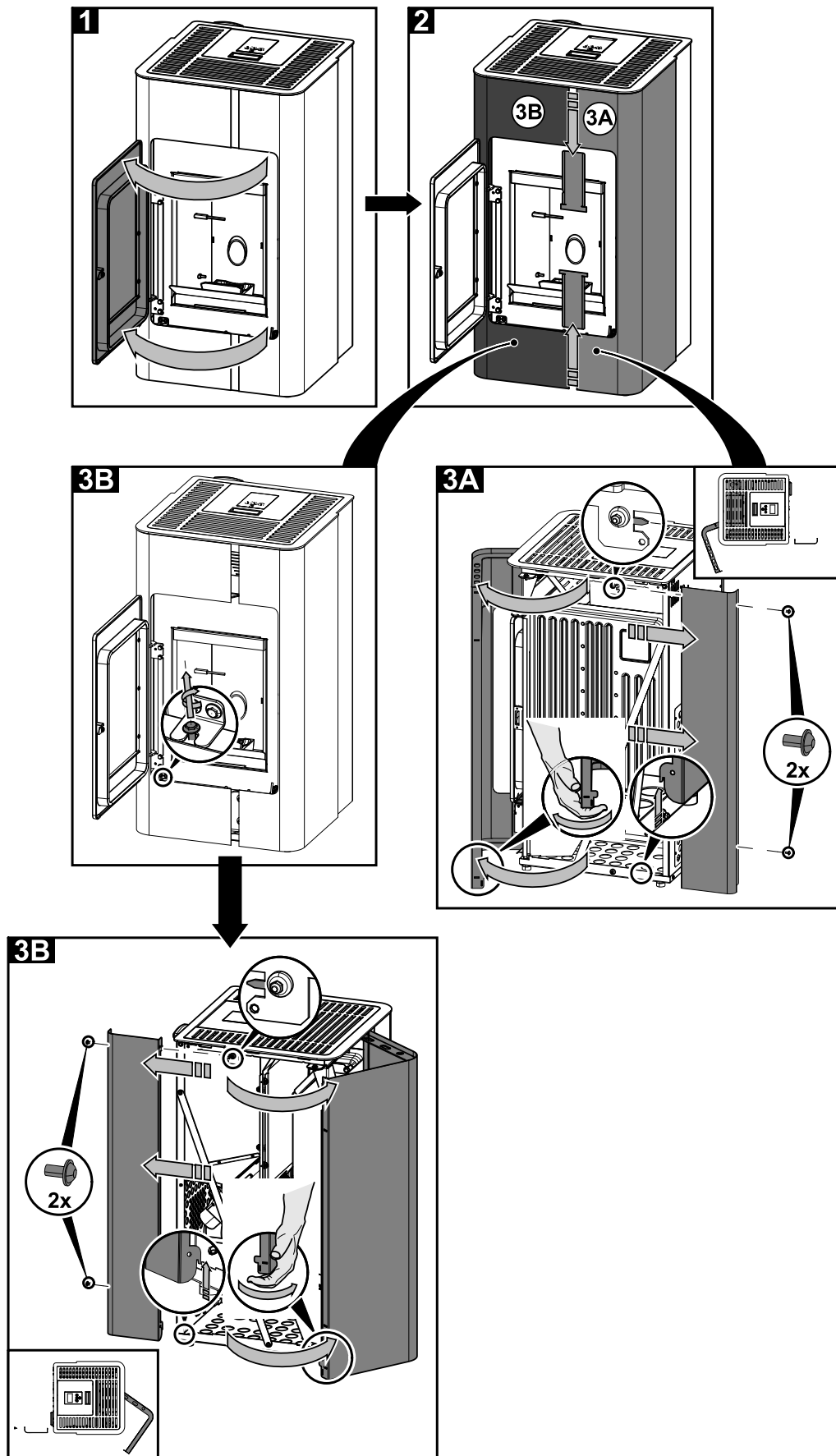


Figure 2a: Removing the side wall

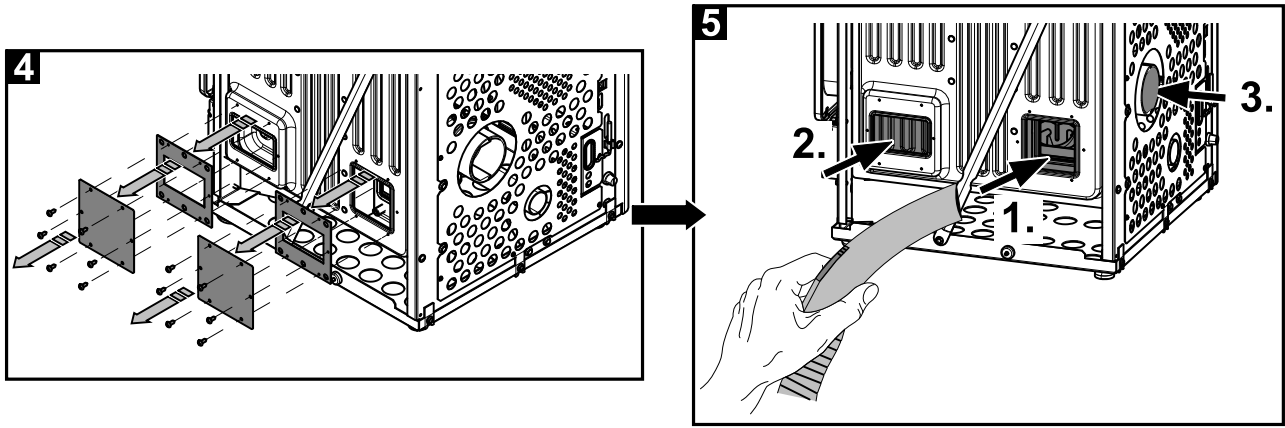


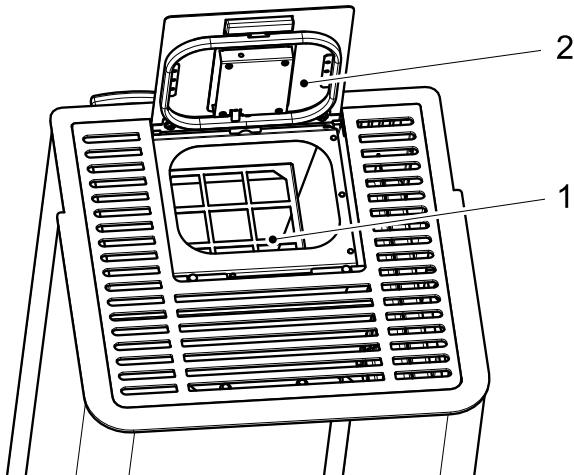
Figure 2b

**CAUTION**

After completion of the cleaning make sure that when putting back the covers, the seals are seated in the right positions. It is essential to replace defective seals.

## 4.2. Cleaning the pellet container - annual maintenance

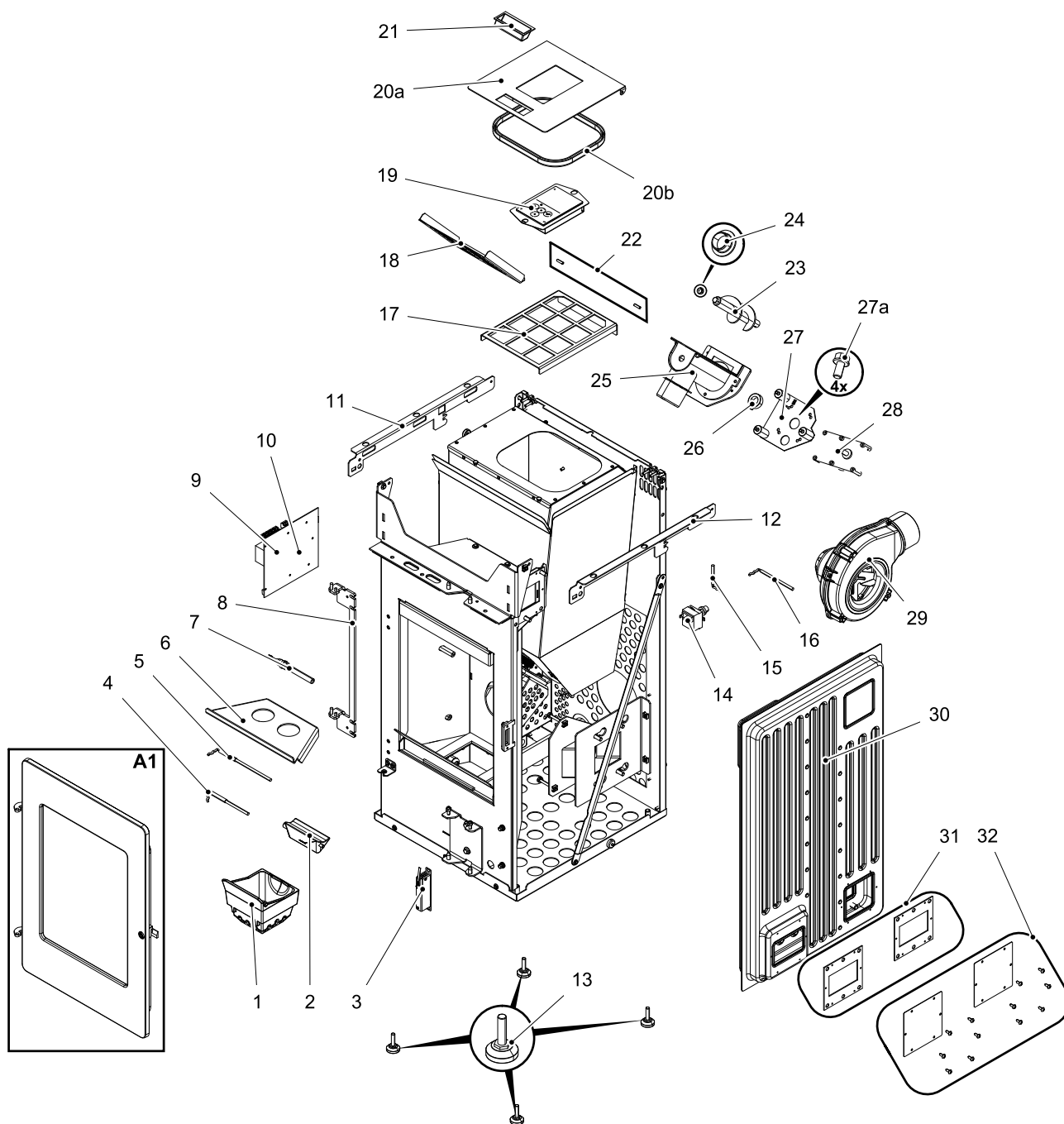
- Heat the pellet stove until the storage tank is completely empty.
- Then the protective grille (1) in the pellet tank may be removed.
- Then clean the tank and the intake of the screw conveyor housing with a vacuum cleaner.
- After cleaning, it is essential to put back the protective grille. When doing this, make sure that no screws fall into the pellet tank so as to avoid consequential damage to the screw conveyor.

**Figure 3: Pellet tank**

- 1 Protective grille  
2 Tank cover

# 5. Replacement parts list

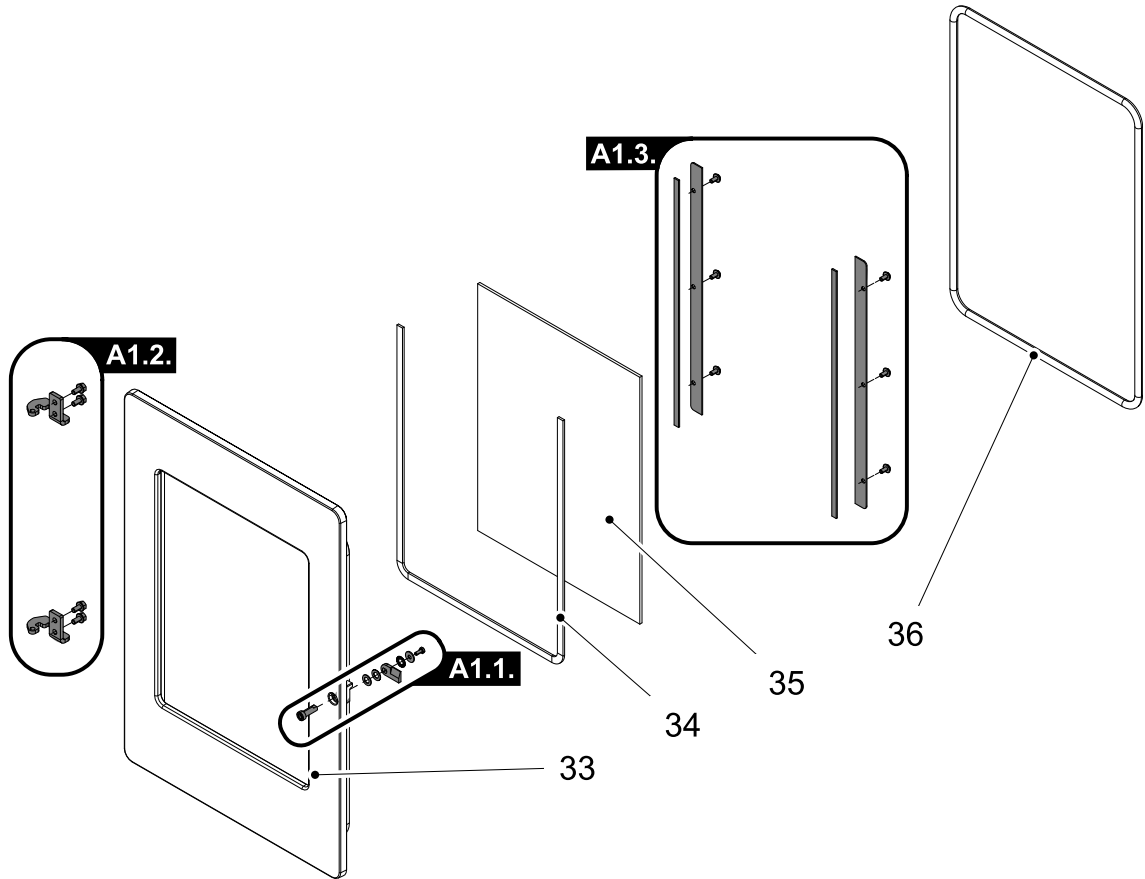
## 5.1. Replacement parts list HSP 2.17 Premium-III (without trim parts)



Pos.	Description	Piece	No. PR
<b>Replacement parts list HSP 2.17 Premium-III (without trim parts)</b>			
<b>A1</b>	Complete combustion chamber door/black	1 piece	0571207005300
<b>1</b>	Burner cast	1 piece	0571207005751
<b>2</b>	Protection grate	1 piece	
<b>3</b>	Door contact switch	1 piece	0561008015510
<b>4</b>	Bottom temperature sensor	1 piece	0561008005543
<b>5</b>	Flame temperature sensor	1 piece	0571207007539
<b>6</b>	Draught baffle plate	1 piece	0571207005701
<b>7</b>	Ignition	1 piece	0541908005202
<b>8</b>	Door hinge (complete)	1 piece	0571207005034
<b>9</b>	Complete control unit	1 piece	0571207005569
<b>10</b>	Backup battery CR 2032	1 piece	-
<b>11</b>	Framework left	1 piece	0571307005021
<b>12</b>	Framework right	1 piece	0571307005020
<b>13</b>	Stand	4 piece	0551908505005
<b>14</b>	OC	1 piece	0571207005840
<b>15</b>	Room temperature sensor	1 piece	0089500390005
<b>16</b>	Flue gas thermosensor	1 piece	0561008005540
<b>17</b>	Protective grille	1 piece	0571207005921
<b>18</b>	Protection combustion chamber	1 piece	0571207006207
<b>19</b>	Operator console	1 piece	0571207005510
<b>20a</b>	Tank cover/anthracite	1 piece	0571307005146
<b>20a</b>	Tank cover/white	1 piece	0571307006146
<b>20b</b>	Seal, tank cover (1000 mm)	1 piece	0561008006197
<b>21</b>	Grip	1 piece	0089500940005
<b>22</b>	Cover hinge pins	1 piece	0030110500181
<b>23</b>	Screw conveyor	1 piece	0571207005030
<b>24</b>	Lower screw conveyor bearing	1 piece	0571207005026
<b>25</b>	Conveyor	1 piece	0571207035060
<b>26</b>	Collet	1 piece	0089000340009
<b>27</b>	Motor plate - set	1 piece	0571207007080
<b>27a</b>	Screw UN5950 M5x10	4 piece	-
<b>28</b>	Screw conveyor motor	1 piece	0089500880005
<b>29</b>	Induced draught fan	1 piece	0571207005820
<b>30</b>	Heat exchanger	1 piece	0571207006020

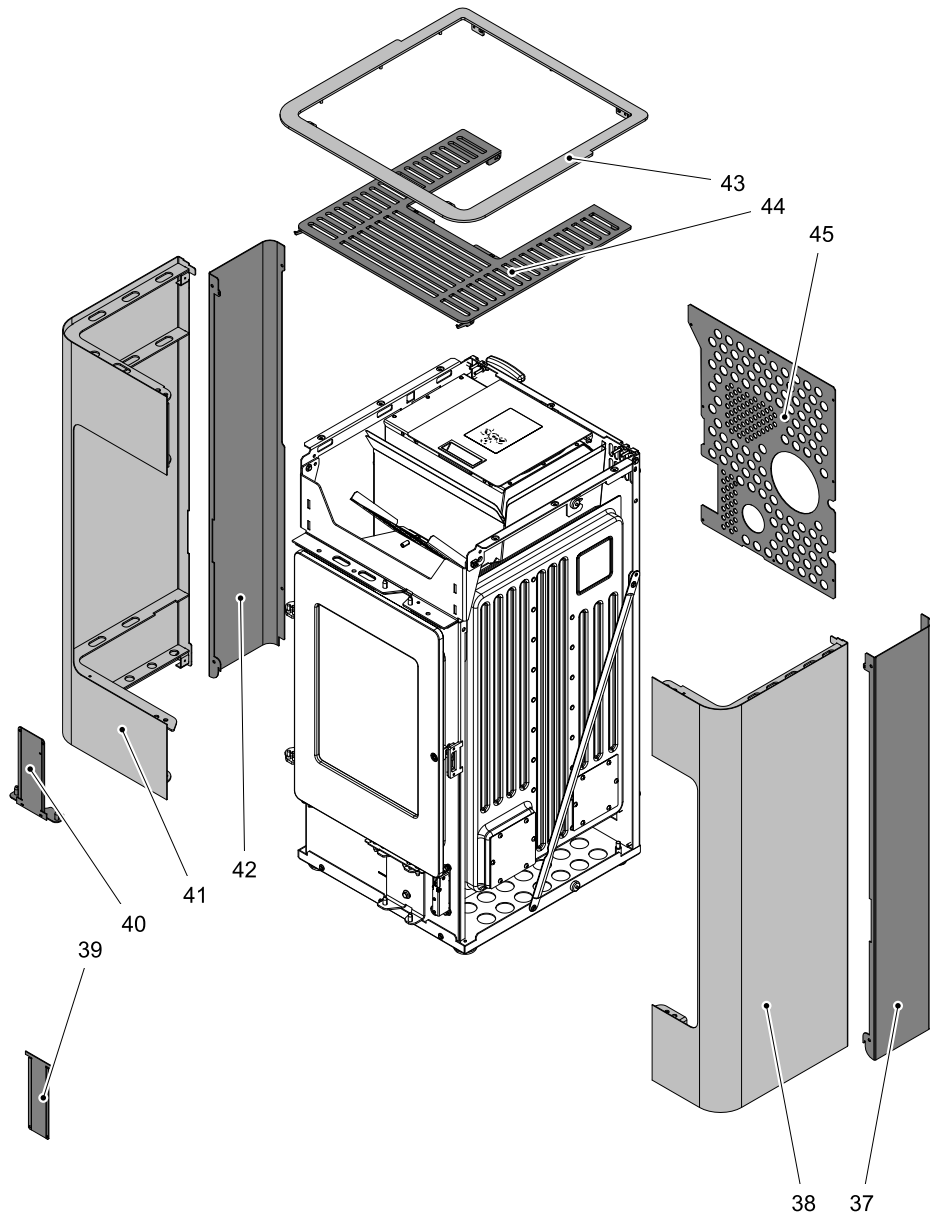
<b>31</b>	Seal - set	1 piece	0561008006041
<b>32</b>	Tank cover + screw DIN 7981 ST 4,8x13 - set	1 piece	0561008016043

# 5.2. Detail A1



Pos.	Description	Piece	No. PR
<b>Detail A1</b>			
<b>A1.1.</b>	Screwing door - Set	1 piece	0571207015125
<b>A1.2.</b>	Door hinge - Set	1 piece	0571207005310
<b>A1.3.</b>	Glass holder - Set	1 piece	0571207015303
<b>33</b>	Combustion chamber door/black	1 piece	0571207007302
<b>34</b>	Seal glass 10x4 mm (1500 mm)	1 piece	0040210040005
<b>35</b>	Door glass (385x292x4)	1 piece	0571207005301
<b>36</b>	Seal door 11 mm (1600 mm)	1 piece	0040300110006

### 5.3. Replacement parts list HSP 2.17 Premium-III



Pos.	Description	Piece	No. PR
<b>Replacement parts list HSP 2.17 Premium-III</b>			
<b>37</b>	Side wall rear right/black	1 piece	0571307005110
<b>37</b>	Side wall rear right/white	1 piece	0571307006110
<b>38</b>	Front plate cast right/anthracite	1 piece	0571307005130
<b>38</b>	Front plate cast right/white	1 piece	0571307006130
<b>39</b>	Lower front panel	1 piece	0571307005039
<b>40</b>	Upper front panel	1 piece	0571307005038
<b>41</b>	Front plate cast left/anthracite	1 piece	0571307005120
<b>41</b>	Front plate cast left/white	1 piece	0571307006120
<b>42</b>	Side wall rear left/black	1 piece	0571307005111



<b>42</b>	Side wall rear left/white	1 piece	0571307006111
<b>43</b>	Cover plate/anthracite	1 piece	0571307005150
<b>43</b>	Cover plate/white	1 piece	0571307006150
<b>44</b>	Upper cover/black	1 piece	0571307005160
<b>44</b>	Upper cover/white	1 piece	0571307006160
<b>45</b>	Back wall	1 piece	0571207105971

# Circuit diagram

14

**Description Circuit diagram:**

No.:	Description Cable harness
3	Mains plug / mains filter
5	Electric ignition
6	Screw conveyor motor
7	Induced draught
8/9	OC
35/36	Flue gas temperature sensor
37/38	Flame temperature sensor
39/40	Room temperature sensor
41/42	Bottom flame temperature sensor
43/44	Door contact switch
48-50	Flue gas fan rotation speed
F1	Fuse T 3,15 A ignition, induced draught fan, screw conveyor motor
F3	Fuse T 0,315 A operator console